

# **WIRELESS GATE HOME ANTENNA**

## ***Quick Setup Guide***



# Index

---

## **Chapter 1. About WIRELESSGATE HOME ANTENNA**

- 1.1 Hardware Overview
- 1.2 LED Indicators Status Description

## **Chapter 2. Easy Setup**

- 2.1 What is Easy Setup
- 2.2 Install Easy Setup

## **Chapter 3. Administrator Complete Setup**

- 3.1 Wireless Router Mode Setup
- 3.2 Wireless Access Point Mode Setup
- 3.3 Wireless Client Mode Setup

## **Chapter 4. Server Login**

- 4.1 Server Login Setup
- 4.2 Administrator Login
- 4.3 User Login

## **Chapter 5. Administrator Optional Setup**

- 5.1 Quick Setup
- 5.2 Advanced Setup

## **Important Information**

Default IP : **192.168.1.1** (Router Mode)

**192.168.1.254** (AP Mode)

**10.64.64.64** (Client Mode)

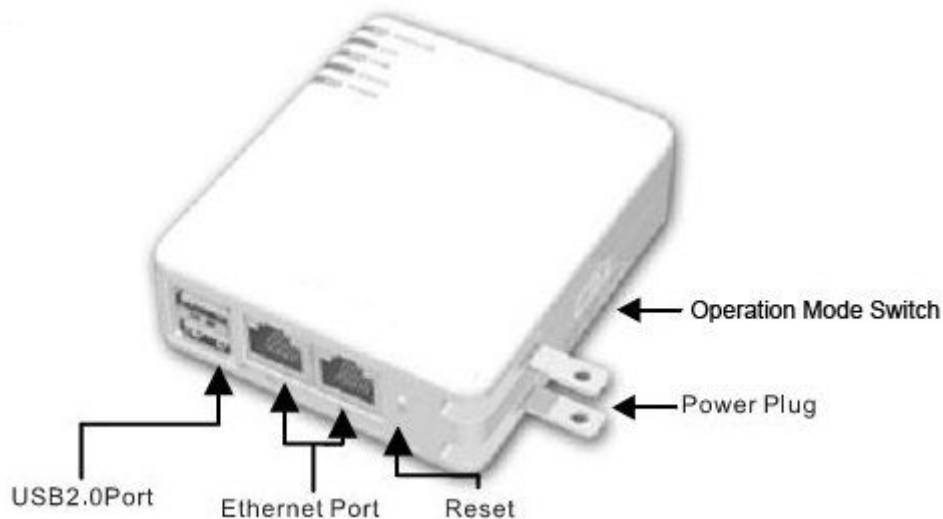
Default Username & Password : **admin**

Default Channel : **6**

Web Browser Requirement : Internet Explorer 5.5, 6.0 or higher version,  
Netscape Navigator 7.x

# Chapter 1 About WIRELESSGATE HOME ANTENNA

## 1.1 Hardware Overview



Power Plug	100V ~ 240V Input
Operation Mode Switch	Router, AP, and Client. 3 operation modes
Reset Button	Press "Reset" button over 7 seconds. When status indicator turns from flashing to solid, the process is completed. All settings are back to default.
Ethernet Port	2 RJ-45 Ethernet 10/100 Ports
USB2.0 Ports	2 USB Ports

- Power on the unit. When Power, Status & Wireless indicator lights become solid, the server router is ready to use.

## 1.2 LED Indicator Status Description

LED Indicator	Status	
	Solid	Flashing
WIRELESS	Operation OK	Transmitting Data
LAN	Ethernet OK	Transmitting Data
WAN	Internet OK	Transmitting Data
STATUS	Operation OK	Reset/Firmware updates in progress
POWER	Operation OK	Firmware upgrade failed

## Chapter 2. Easy Setup

### 2.1 What is Easy Setup

**Easy Setup** is a quick and easy install genie which offers you a super easy way to set up the internet connection and USB devices.

### 2.2 Install Easy Setup

**Step 1.** Download Setup.exe, and double-click this file for installation.

**Step 2.** While the illustration below is shown, click on **Finish** to complete **Easy Setup** installation.

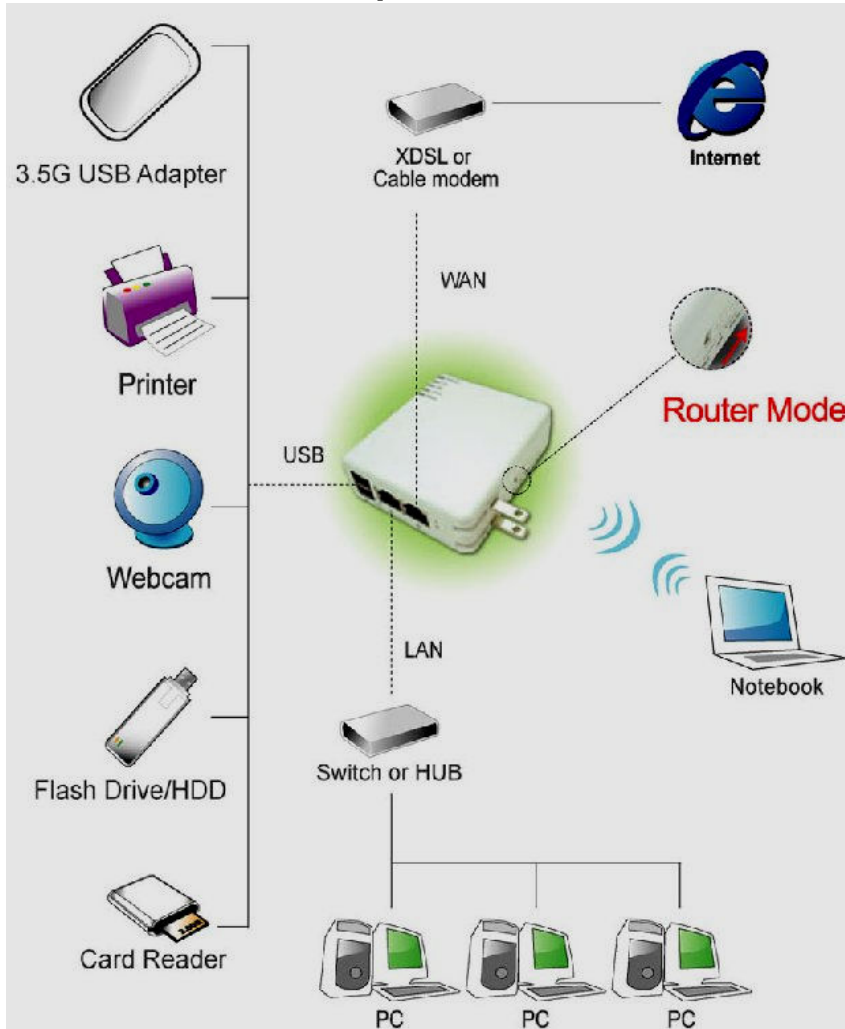


After completing the installation, **Easy Setup** icon will be generated on desktop automatically.



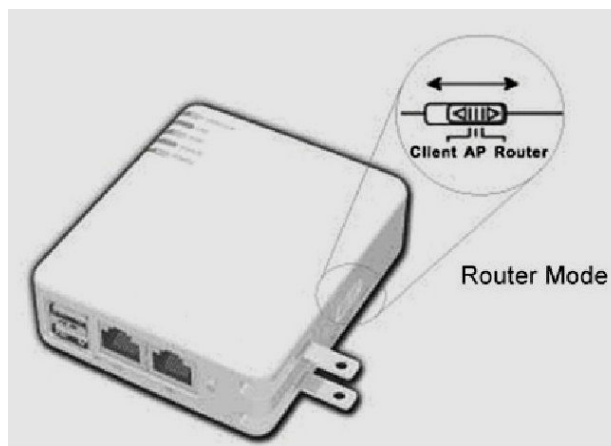
# Chapter 3. Administrator Complete Setup

## 3.1 Wireless Router Mode Setup

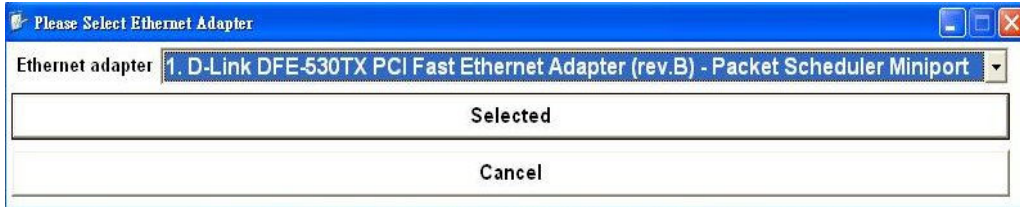


Build up WAN and wireless LAN with WIRELESS GATE HOME ANTENNA

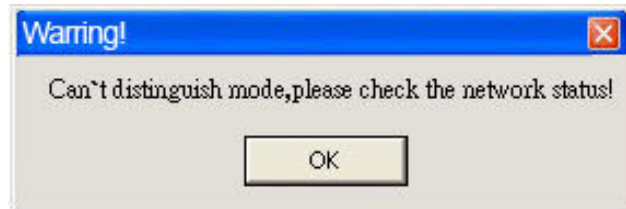
**Step 1.** Please switch to Router mode and plug in power.



**Step 2.** Please click on **Easy Setup** icon on your desktop to start the utility. When the following window pops up, please select your Ethernet adapter for the internet connection.



If the operation mode is not switched properly, the warning message will pop up. Please power off the unit and check the switch.



**Step 3.** Please select **Administrator Complete Setup** to start the configuration.



Please enter the default password **admin**, and click **Yes**.

Username :

Password :

 Exit       Yes

**Step 4.** To change password, please enter your new password and click **Next**. Or just click on **Next** to continue.

**3.5G plus WLAN  
Mobile Server Router**



**Router Mode**

  
PASSWORD

  
ISP

  
SSID

  
SECURITY

  
READY

▶ Enter a new password.(optional)

Username :

Password :

 Back       Next

**Step 5.** Please select your Internet connection type and be reminded that you cannot connect Internet via wired and wireless at the same time. Then click **Next** when finished. If you're not sure, please contact your Internet Service Provider (ISP). (Diagram below is for reference only.)

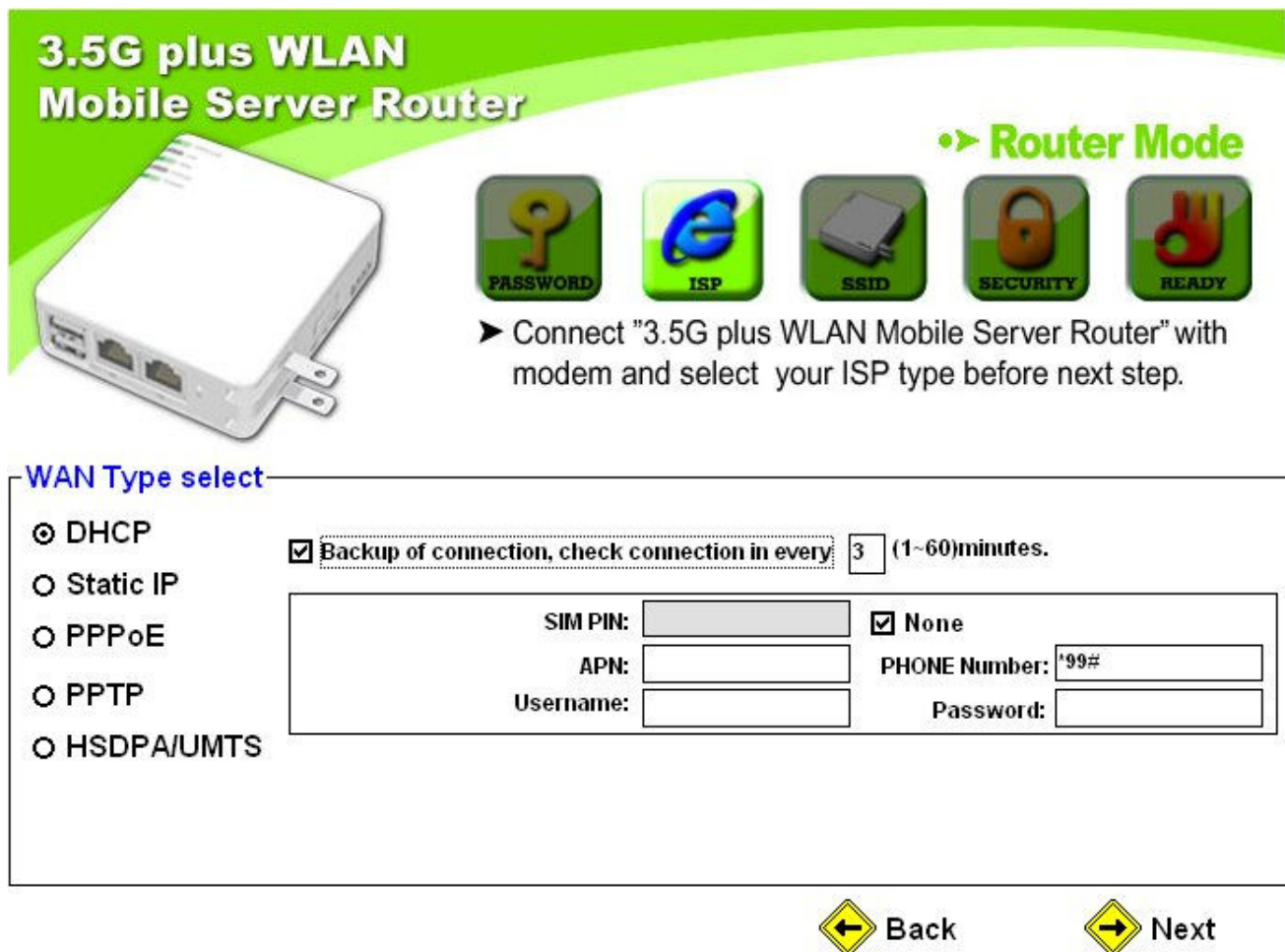
### **Type1 Dynamic IP Setup**

Click **DHCP** as your Internet connection type. If you're not sure, please contact your Internet Service Provider (ISP).

Here provides **Backup of Connection** function to indicate that when **DHCP** is disconnected and detected, the system automatically provides **HSDPA/UMTS** connection as backup. The default interval between the two connection detection is 3 minutes, and the range is from 1 to 3 minutes. If 3.5G signal is not available, it starts to search downward for 3/2.75/2.5G signals until none existed. Also, information like user name, password and SIM PIN etc. are required here. Please refer to User Manual for more

details.

And click **Next** to continue.



**3.5G plus WLAN  
Mobile Server Router**

**Router Mode**

**PASSWORD** **ISP** **SSID** **SECURITY** **READY**

➤ Connect "3.5G plus WLAN Mobile Server Router" with modem and select your ISP type before next step.

**WAN Type select**

- DHCP
- Static IP
- PPPoE
- PPTP
- HSDPA/UMTS

Backup of connection, check connection in every:  (1~60)minutes.

SIM PIN: <input type="text"/>	<input checked="" type="checkbox"/> None
APN: <input type="text"/>	PHONE Number: <input type="text" value="*99#"/>
Username: <input type="text"/>	Password: <input type="text"/>

**← Back** **Next →**

### Type 2 Static IP Setup

Click **Static IP** and insert the required information as diagram shown below. If you're not sure, please contact your Internet Service Provider (ISP).

Here provides **Backup of Connection** function to indicate that when **Static IP** is disconnected and detected, the system automatically provides **HSDPA/UMTS** connection as backup. The default interval between the two connection detection is 3 minutes, and the range is from 1 to 3 minutes. If 3.5G signal is not available, it starts to search downward for 3/2.75/2.5G signals until none existed. Also, information like user name, password and SIM PIN etc. are required here. Please refer to User Manual for more details.

And click **Next** to continue.



## 3.5G plus WLAN Mobile Server Router



### Router Mode



► Connect "3.5G plus WLAN Mobile Server Router" with modem and select your ISP type before next step.

#### -WAN Type select

- DHCP
- Static IP
- PPPoE
- PPTP
- HSDPA/UMTS

#### Please Input Static IP info

IP Address	<input type="text"/>	<input type="text"/>	<input type="text"/>	<input type="text"/>	Primary DNS	<input type="text"/>	<input type="text"/>	<input type="text"/>	<input type="text"/>
Subnet Mask	<input type="text"/>	<input type="text"/>	<input type="text"/>	<input type="text"/>	Secondary DNS	<input type="text"/>	<input type="text"/>	<input type="text"/>	<input type="text"/>
IP Gateway	<input type="text"/>	<input type="text"/>	<input type="text"/>	<input type="text"/>					

Backup of connection, check connection in every:  (1-60)minutes.

SIM PIN:	<input type="text"/>	<input checked="" type="checkbox"/> None
APN:	<input type="text"/>	PHONE Number: '99#
Username:	<input type="text"/>	Password: <input type="text"/>



Back



Next

### Type 3 PPPoE Setup

Click **PPPoE**, and then enter your user name and password. If you're not sure, please contact your Internet Service Provider (ISP).

Here provides **Backup of Connection** function to indicate that when **PPPoE** is disconnected and detected, the system automatically provides **HSDPA/UMTS** connection as backup. The default interval between the two connection detection is 3 minutes, and the range is from 1 to 3 minutes. If 3.5G signal is not available, it starts to search downward for 3/2.75/2.5G signals until none existed. Also, information like user name, password and SIM PIN etc. are required here. Please refer to User Manual for more details.

Click **Next** to continue.

## 3.5G plus WLAN Mobile Server Router



### Router Mode



► Connect "3.5G plus WLAN Mobile Server Router" with modem and select your ISP type before next step.

#### WAN Type select

- DHCP
- Static IP
- PPPoE
- PPTP
- HSDPA/UMTS

##### Input PPPoE info

Username :

Password :

Backup of connection, check connection in every  (1~60)minutes.

SIM PIN:

None

APN:

PHONE Number:

Username:

Password:



Back



Next

#### Type 4 PPTP Setup

Click **PPTP** and fill in the required information. If you're not sure, please contact your Internet Service Provider (ISP).

Here provides **Backup of Connection** function to indicate that when **PPTP** is disconnected and detected, the system automatically provides **HSDPA/UMTS** connection as backup. The default interval between the two connection detection is 3 minutes, and the range is from 1 to 3 minutes. If 3.5G signal is not available, it starts to search downward for 3/2.75/2.5G signals until none existed. Also, information like user name, password and SIM PIN etc. are required here. Please refer to User Manual for more details.

And click **Next** to continue.

## 3.5G plus WLAN Mobile Server Router



### ➤ Router Mode



➤ Connect "3.5G plus WLAN Mobile Server Router" with modem and select your ISP type before next step.

#### WAN Type select

- DHCP
- Static IP
- PPPoE
- PPTP
- HSDPA/UMTS

Input PPTP info	
Username :	<input type="text"/>
Password :	<input type="text"/>
PPTP Server IP	<input type="text"/> <input type="text"/> <input type="text"/> <input type="text"/>
Primary DNS	<input type="text"/> <input type="text"/> <input type="text"/> <input type="text"/>
My WAN IP	<input type="text"/> <input type="text"/> <input type="text"/> <input type="text"/>
Secondary DNS	<input type="text"/> <input type="text"/> <input type="text"/> <input type="text"/>
My Subnet Mask	<input type="text"/> <input type="text"/> <input type="text"/> <input type="text"/>
<input checked="" type="checkbox"/> Backup of connection, check connection in every: <input type="text" value="3"/> (1~60)minutes.	
SIM PIN:	<input type="text"/> <input checked="" type="checkbox"/> None
APN:	PHONE Number: <input type="text" value="'99#"/>
Username:	Password: <input type="text"/>



Back



Next

#### Type 5 HSDPA/UMTS Setup

Click **HSDPA/UMTS** and fill in the required information. If you're not sure, please contact your Internet Service Provider (ISP). At this moment, **Backup of Connection** is not available. When 3.5G signal cannot be reached, the system starts to search downward for 3/2.75/2.5G signals until none existed. Please refer to User Manual on CD for more details, and click **Next** to continue.

## 3.5G plus WLAN Mobile Server Router



### Router Mode



► Connect "3.5G plus WLAN Mobile Server Router" with modem and select your ISP type before next step.

#### WAN Type select

- DHCP
- Static IP
- PPPoE
- PPTP
- HSDPA/UMTS

#### Input HSDPA/UMTS info

SIM PIN:   None

APN:  PHONE Number:

Username:  Password:

Always

Dial on demand

After idling for  (0-60 Minutes, if you enter 0 or no input, it will be set to "Always")



Back



Next

**Step 6.** Name your wireless network, please follow the instruction and click on **Next** to continue. (The default **Wireless\_Mobile\_Router** is recommended.)

## 3.5G plus WLAN Mobile Server Router



### Router Mode



► Create a wireless network name.

SSID



Back




Next

**Step 7.** Please select to encrypt your wireless network or not. If you wish not to encrypt, click **Next** to continue.



**3.5G plus WLAN  
Mobile Server Router**



**Router Mode**

PASSWORD ISP SSID SECURITY READY

► Create a wireless network encryption to protect your system from other wireless users.

Encryption Type:

Authentication Mode:  Open  Shared

[? Help](#)


Back Next

To encrypt, please follow the instructions below for each option.

**Option 1 WEP**

As the illustration shown below, select your encryption and key type from the drop-down list. Then enter the key and click **Next** when finished. Or you can click **Help** for given examples. For details, please refer to the User Manual.

**3.5G plus WLAN  
Mobile Server Router**



**Router Mode**

PASSWORD ISP SSID SECURITY READY

► Create a wireless network encryption to protect your system from other wireless users.

Encryption Type:

Authentication Mode:  Open  Shared

[? Help](#)

**WEP**

WEP Encryption:

Key Type:

Passphrase:

WEP Key 1

WEP Key 2

WEP Key 3

WEP Key 4

Back Next

**Option 2 WPA**

Please refer to the following graphic in explain. Or you can click **Help** for given examples. After completing the required information, click **Next** to continue. Please read User Manual if you need more details.

**3.5G plus WLAN Mobile Server Router**

**Router Mode**

PASSWORD  
  ISP  
  SSID  
  SECURITY  
  READY

► Create a wireless network encryption to protect your system from other wireless users.

Encryption Type: **WPA** [? Help](#)

Authentication Mode:  Open    Shared

**WPA**

WPA-PSK(TKIP)  
  Radius with 802.1x

WPA-PSK(Pre-Shared Key)

◀ Back   Next ▶

**Step 8.** The system automatically detects the connected USB devices and lists them as the diagram shown below, including document server, webcam server and printer server etc. The table indicates their operation status and other information. Please click on **Next** to continue or **Rescan** to find any new devices.

**3.5G plus WLAN Mobile Server Router**

**USB Devices**

SEARCH  
  FOUND  
  ON/OFF  
  READY

► Search the connected USB device.

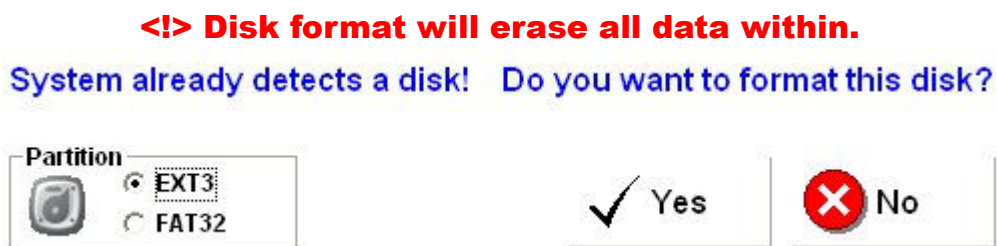
USB Port	USB Type	Name	Model
USB00	Webcam	N/A	Generic Camera (no ID)
USB01	Storage	N/A	Vendor:152d ProdID:2339

Rescan   Next ▶

**Step 9.** The found USB devices are also shown as below. Please refer to **Chapter 5 Administrator Optional Setup** for further step. Just click **Next** to continue.



**Step 10.** If a USB flash/drive is connected, the window pops up to enquire as follows. Click **Yes** or **No** by demand.



**Step 11.** Please select to enable the server you need, and click on **Next** to continue.

**3.5G plus WLAN  
Mobile Server Router**



**•> USB Devices**

SEARCH FOUND ON/OFF READY

► "Enable" turn on/off the USB device server.

FTP Server

**Enable FTP Server**

**Access from WAN**

Samba Server

**Enable Samba Server**

Workgroup Name

Server Name

 Back  Next

**Step 12.** Select to enable or disable your webcam server.

**3.5G plus WLAN  
Mobile Server Router**



**•> USB Devices**

SEARCH FOUND ON/OFF READY

► "Enable" turn on/off the USB device server.

**Enable Webcam Server**

**Access from WAN**

 Back  Next

**Step 13.** Create user names, passwords, and authorize their access rights for each server at the same time, then click **Add**. Please click **Next** to finish when all accounts are completed.



## 3.5G plus WLAN Mobile Server Router



Add User Account.

### Create User account

User name :

Password :

### Right

- Web Camera Monitor
- FTP Server
- Samba Folder

name	Right



Back



Next



Add

**Step 14.** When the following screenshot appears, click **Finish** to end the quick setup.

## 3.5G plus WLAN Mobile Server Router



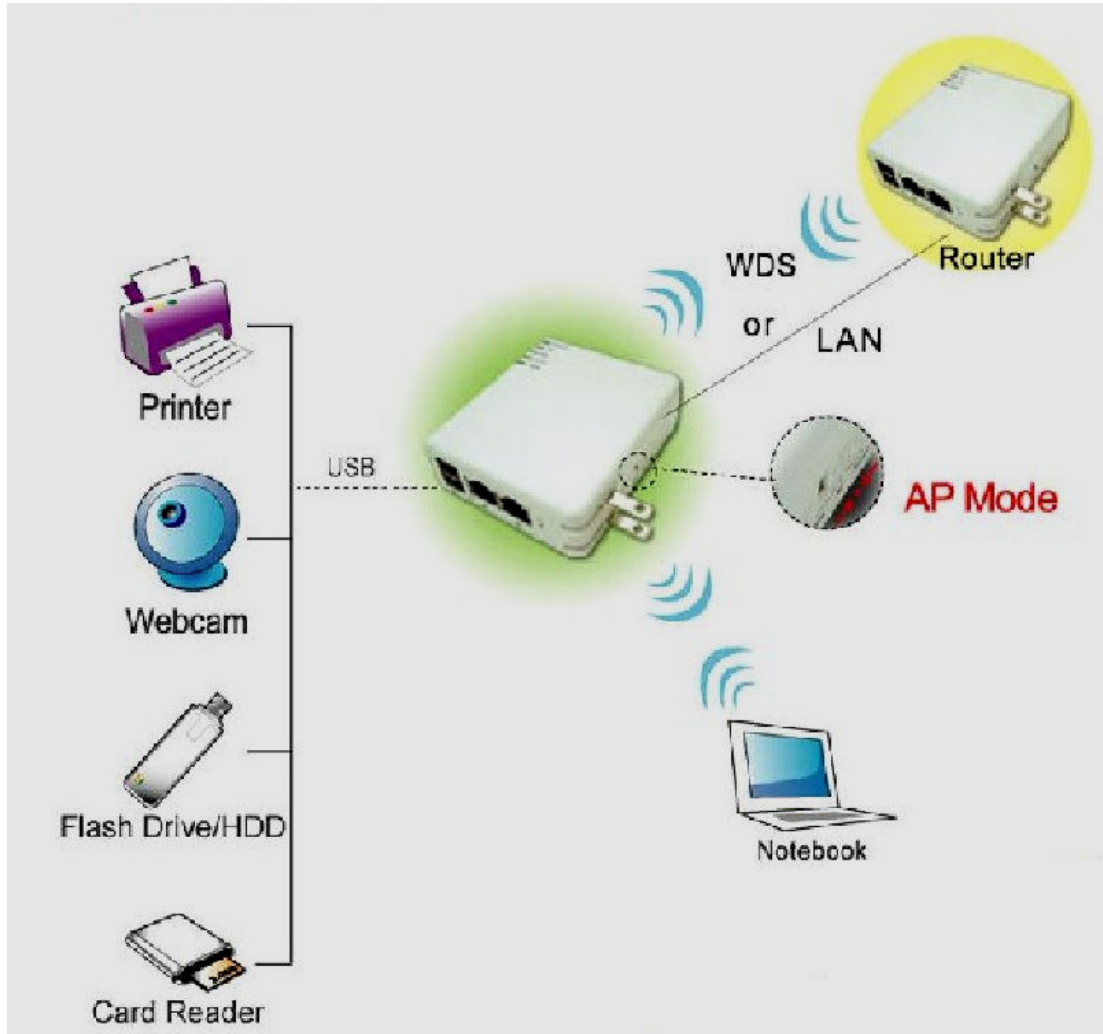
### Router Mode



► Click "Finish" to complete the setup.

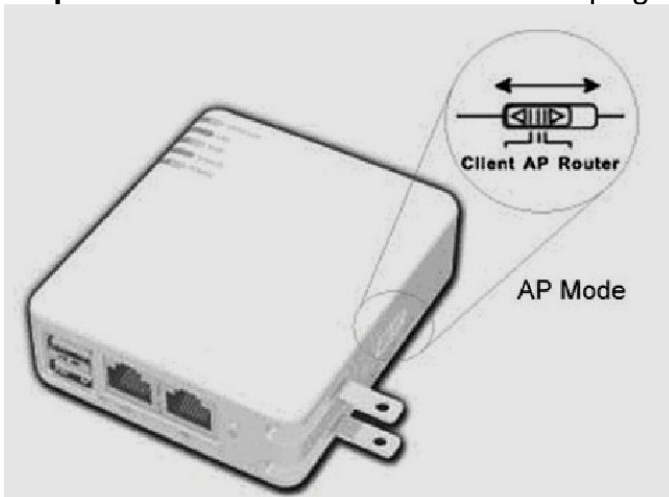
**Finish!**

### 3.2 Wireless Access Point Mode Setup



While WAN is connected, expand the network coverage with the unit. WIRELESS GATE HOME ANTENNA in AP mode doesn't support WAN and DDNS.

**Step 1.** Please switch to AP mode and plug in power.



**Step 2.** Please click on **Easy Setup** icon on your desktop to start the utility. When the following window pops up, please select your Ethernet adapter for the internet connection.



If the operation mode is not switched properly, the warning message will pop up. Please power off the unit and check the switch.



**Step 3.** Please select **Administrator Complete Setup** to start the configuration.



Please enter the default password **admin**, and click **Yes**.

Username :

Password :

 Exit       Yes

**Step 4.** To change password, please enter your new password and click **Next**. Or just click on **Next** to continue.

### 3.5G plus WLAN Mobile Server Router

•> AP Mode

  
 PASSWORD

  
 SSID

  
 SECURITY

  
 READY

▶ Enter a new password.(optional)

Username :


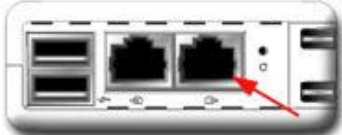
Password :

 Back       Next

**Step 5.** Enter both AP and Gateway IP addresses as shown below or modify if necessary. For more details, please refer to User Manual. Click **Next** to continue.

### 3.5G plus WLAN Mobile Server Router



•> AP Mode

▶ Connect 3.5G plus WLAN Mobile Server Router's WAN port to local LAN.

AP IP Address     .  .  .

Gateway IP Address     .  .  .

 Back       Next

**Step 6.** The default SSID shows up automatically, or modify it if necessary; otherwise, click **Next** to continue. For more details, please refer to User Manual.

**3.5G plus WLAN  
Mobile Server Router**

**•> AP Mode**

**PASSWORD** **SSID** **SECURITY** **READY**

► Create a wireless network name.

SSID

Back Next

Use the default of `Wireless_Mobile_Router` as recommended.

**Step 7.** Please select to encrypt your wireless network or not. If you wish not to encrypt, click **Next** to continue.

**3.5G plus WLAN  
Mobile Server Router**

**•> AP Mode**

**PASSWORD** **SSID** **SECURITY** **READY**

► Create encryption to protect your system.  
(Click "Help" for detail)

Encrypt Type  Help

Authentication Mode  Open  Shared

Back Next

To encrypt, please follow the instructions below for each option.



### Option 1 WEP

As the illustration shown below, select your encryption and key type from the drop-down list. Then enter the key and click **Next** when finished. Or you can click **Help** for given examples. For details, please refer to the User Manual.



The interface for the 3.5G plus WLAN Mobile Server Router in AP Mode. It features a product image on the left and four navigation icons (PASSWORD, SSID, SECURITY, READY) on the right. Below the icons is a prompt: 'Create encryption to protect your system.' and a link '(Click "Help" for detail)'. The configuration form includes:

- Encrypt Type: WEP
- Authentication Mode:  Open,  Shared
- WEP Encryption: 64bits
- Key Type: HEX
- Passphrase: [text input]
- WEP Key 1: [text input]
- WEP Key 2: [text input]
- WEP Key 3: [text input]
- WEP Key 4: [text input]

Navigation buttons: Back and Next.

### Option 2 WPA

Please refer to the following graphic in explain. Or you can click **Help** for given examples. After completing the required information, click **Next** to continue. Please refer to User Manual for more details.



The interface for the 3.5G plus WLAN Mobile Server Router in AP Mode. It features a product image on the left and four navigation icons (PASSWORD, SSID, SECURITY, READY) on the right. Below the icons is a prompt: 'Create encryption to protect your system.' and a link '(Click "Help" for detail)'. The configuration form includes:

- Encrypt Type: WPA
- Authentication Mode:  Open,  Shared
- WPA:  WPA-PSK(TKIP),  Radius with 802.1x
- WPA-PSK(Pre-Shared Key): [text input]

Navigation buttons: Back and Next.

**Step 8.** The system automatically detects the connected USB devices and lists them as the diagram shown below, including document server, webcam server and printer server etc. The table indicates their operation status and other information. Please click on **Next** to continue or **Rescan** to find any new devices.

**3.5G plus WLAN Mobile Server Router**

**➤ USB Devices**

SEARCH FOUND ON/OFF READY

➤ Search the connected USB device.

USB Port	USB Type	Name	Model
USB00	Webcam	N/A	Generic Camera (no ID)
USB01	Storage	N/A	USB Flash Disk

Rescan Next

**Step 9.** The system can only detect at most 2 devices at a time and shows the relative server icons as the example below. Please refer to **Chapter 5 Administrator Optional Setup** for further step. Just click **Next** to continue.

**3.5G plus WLAN Mobile Server Router**

**➤ USB Devices**

SEARCH FOUND ON/OFF READY

➤ USB device found.

My FTP FTP

Network Disk Samba

My Webcam USB Webcam

Back Next

**Step 10.** If a USB flash/drive is connected, the window pops up to enquire as follows. Click **Yes** or **No** by demand.

**<!> Disk format will erase all data within.**

System already detects a disk! Do you want to format this disk?

<b>Partition</b>  <input checked="" type="radio"/> EXT3 <input type="radio"/> FAT32	<input checked="" type="checkbox"/> Yes	<input type="checkbox"/> No
--	---	-----------------------------

**Step 11.** Please select to enable the server you need, and click on **Next** to continue.

### 3.5G plus WLAN Mobile Server Router



**➤ USB Devices**

➤ "Enable" turn on/off the USB device server.

<b>FTP Server</b> <input checked="" type="checkbox"/> <b>Enable FTP Server</b> <input checked="" type="checkbox"/> Access from WAN
<b>Samba Server</b> <input checked="" type="checkbox"/> <b>Enable Samba Server</b> Workgroup Name <input type="text" value="Workgroup"/> Server Name <input type="text" value="default"/>

 Back  Next

**Step 12.** Select to enable or disable your webcam server.

### 3.5G plus WLAN Mobile Server Router



**➤ USB Devices**

➤ "Enable" turn on/off the USB device server.

<input checked="" type="checkbox"/> <b>Enable Webcam Server</b> <input checked="" type="checkbox"/> Access from WAN
--

 Back  Next



**Step 13.** Create user names, passwords, and authorize their access rights for each server at the same time, then click **Add**. Please click **Next** to finish when all accounts are completed.

**3.5G plus WLAN  
Mobile Server Router**

Add User Account.

**Create User account**

User name :

Password :

**Right**

Web Camera Monitor

FTP Server

Samba Folder

name	Right

Back   
 Next   
 Add

**Step 14.** When the following screenshot appears, click **Finish** to end the quick setup.

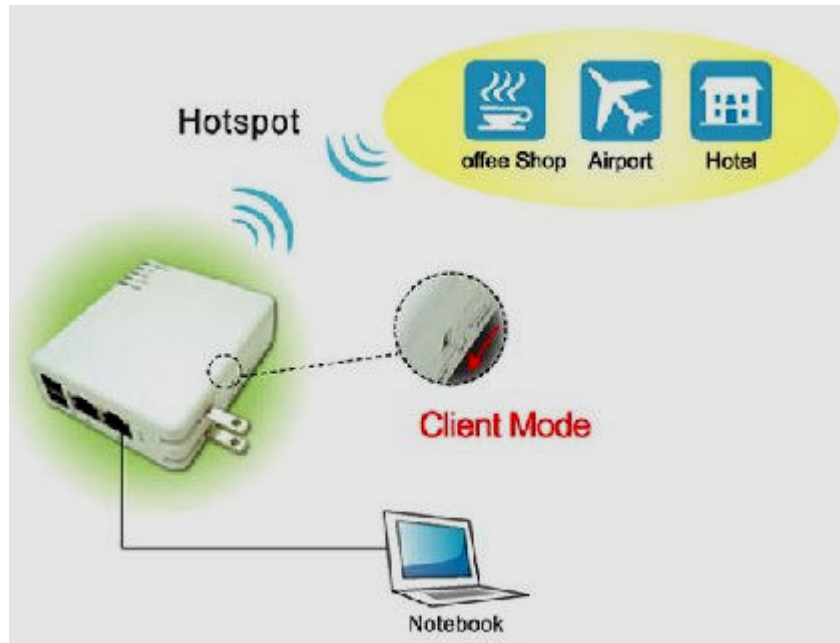
**3.5G plus WLAN  
Mobile Server Router**

**AP Mode**

► Click "Finish" to complete the setup.

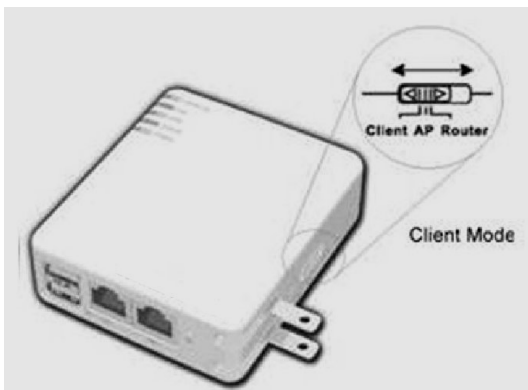
**Finish!**

### 3.3 Wireless Client Mode Setup

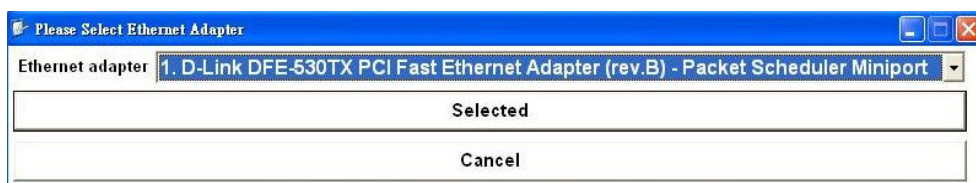


When WAN & wireless LAN are ready, equip PC or NB with wireless function. WIRELESS GATE HOME ANTENNA in Client mode doesn't support WAN.

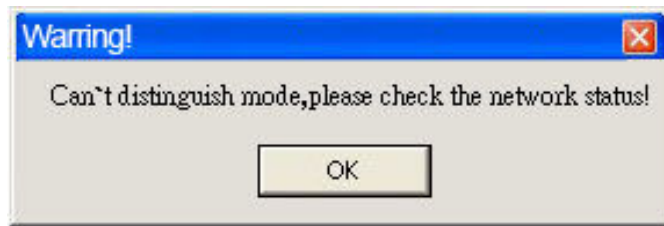
**Step 1.** Please switch to Client mode and plug in power.



**Step 2.** Please click on **Easy Setup** icon on your desktop to start the utility. When the following window pops up, please select your Ethernet adapter for the internet connection.



If the operation mode is not switched properly, the warning message will pop up. Please power off the unit and check the switch.



**Step 3.** Please select **Administrator Complete Setup** to start the configuration.



Please enter the default password **admin**, and click **Yes**.

A login form with two input fields. The first field is labeled "Username:" and contains the text "admin". The second field is labeled "Password:" and is empty. Below the fields are two buttons: "Exit" with a door icon and "Yes" with a notepad and pencil icon.

**Step 4.** To change password, please enter your new password and click **Next**. Or just click on **Next** to continue.

## 3.5G plus WLAN Mobile Server Router

➤ Client Mode



  
**PASSWORD**

  
**A.P**

  
**SECURITY**

  
**READY**

➤ Enter a new password.(optional)

Username :

Password :

⬅ Back
➡ Next

**Step 5.** Site Survey window will show all available APs, please select one to connect then click **Next**. If no AP is found, please click **Rescan**.

## 3.5G plus WLAN Mobile Server Router

➤ Client Mode







  
**PASSWORD**

  
**A.P**

  
**SECURITY**

  
**READY**

➤ Select an AP from the list.

SSID	Mac Address	Channel	Encrypt	
 Storage_Fax_Server_Router	00:14:85:D0:B8:F2	3	Yes	
 Netopia_Lab2	00:0F:CC:4C:46:A8	7	No	
 MiniRouter_LAB	00:0D:F0:25:61:E4	9	No	
 linksys_SES	00:13:10:05:16:5E	9	Yes	

AP Details

Network Name[SSID]: Storage\_Fax\_Server\_Router

MAC Address: 00:14:85:D0:B8:F2

Operating State: Yes

Channel: 3

Signal Strength:  81 %

Rescan
Back
Next

**Step 6.** This unit supports five encryption types: **None (no encryption)**, **Open-System**, **Shared-Key**, **TKIP** and **AES**, please select the encryption type from drop-down list. For more details, refer to User Manual. Click **Next** to continue.



**Step 7.** In few seconds, a connect status window will pop up. Please click **OK**.



**Step 8.** Afterwards, the system automatically detects the connected USB devices and lists them as the diagram shown below, including document server, webcam server and printer server etc. The table indicates their operation status and other information. Please click on **Next** to continue or **Rescan** to find any new devices.





**Step 9.** The system can only detect at most 2 devices at a time and shows the relative server icons as the example below. Please refer to **Chapter 5 Administrator Optional Setup** for further step. Just click **Next** to continue.



**Step 10.** If a USB flash/drive is connected, the window pops up to enquire as follows. Click **Yes** or **No** by demand.

**<!> Disk format will erase all data within.**

System already detects a disk! Do you want to format this disk?

Partition <input checked="" type="radio"/> EXT3 <input type="radio"/> FAT32	<input checked="" type="checkbox"/> Yes	<input type="checkbox"/> No
---	---	-----------------------------

**Step 11.** Please select to enable the server you need, and click on **Next** to continue.

## 3.5G plus WLAN Mobile Server Router



### •> USB Devices



► “Enable” turn on/off the USB device server.

#### FTP Server

**Enable FTP Server**

**Access from WAN**

#### Samba Server

**Enable Samba Server**

Workgroup Name

Server Name



Back



Next

**Step 12.** Select to enable or disable your webcam server.

## 3.5G plus WLAN Mobile Server Router



### •> USB Devices



► “Enable” turn on/off the USB device server.

**Enable Webcam Server**

**Access from WAN**



Back



Next

**Step 13.** Create user names, passwords, and authorize their access rights for each server at the same time, then click **Add**. Please click **Next** to finish when all accounts are completed.

## 3.5G plus WLAN Mobile Server Router



Add User Account.

### Create User account

User name :   
Password :

### Right

- Web Camera Monitor
- FTP Server
- Samba Folder

name	Right



Back



Next



Add

**Step 14.** Please click **Finish** to complete the client mode quick setup.

## 3.5G plus WLAN Mobile Server Router



•> Client Mode

► Click "Finish" to complete the setup.

**Finish!**

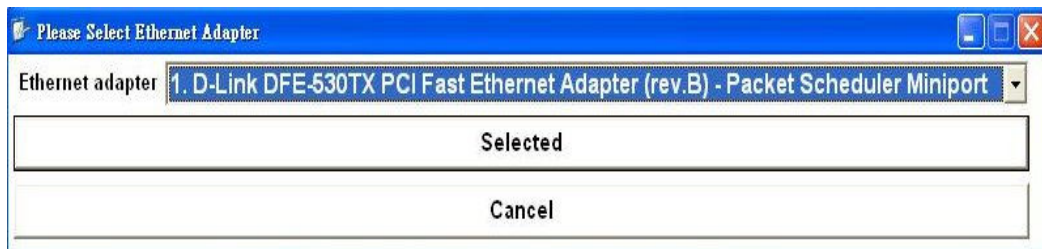


# Chapter 4 Server Login

## 4.1 Server Login Setup

Before logging in, please enable each server first. Under this function, users can manage their folders on different servers, and create their own files.

**Step 1.** Please click on **Easy Setup** icon on your desktop to start the utility. When the following window pops up, just select your Ethernet adapter for the internet connection.



**Step 2.** Select **Server Login** to start the process.



## 4.2 Administrator Login

**Step 1.** Please enter the default password **admin**, and click **Login** to next step.



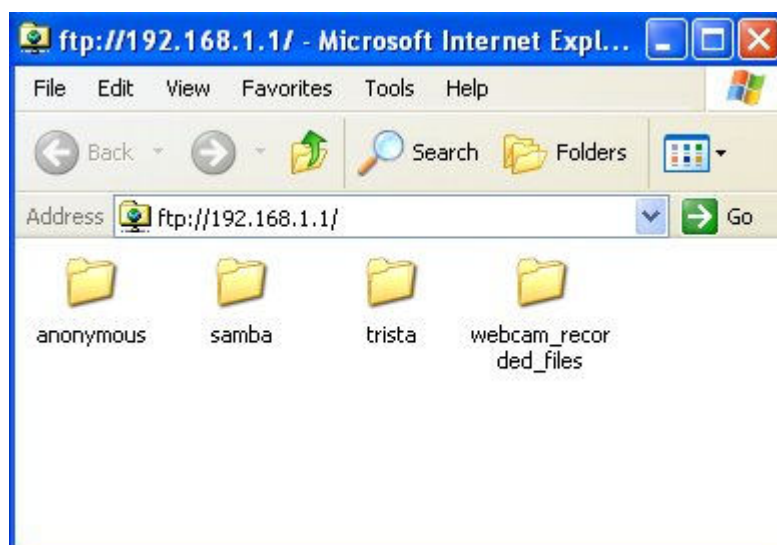
**Step 2.** The server list window shows the icons of previously enabled USB devices. Please click each to find out more.



### 4.2.1 My FTP



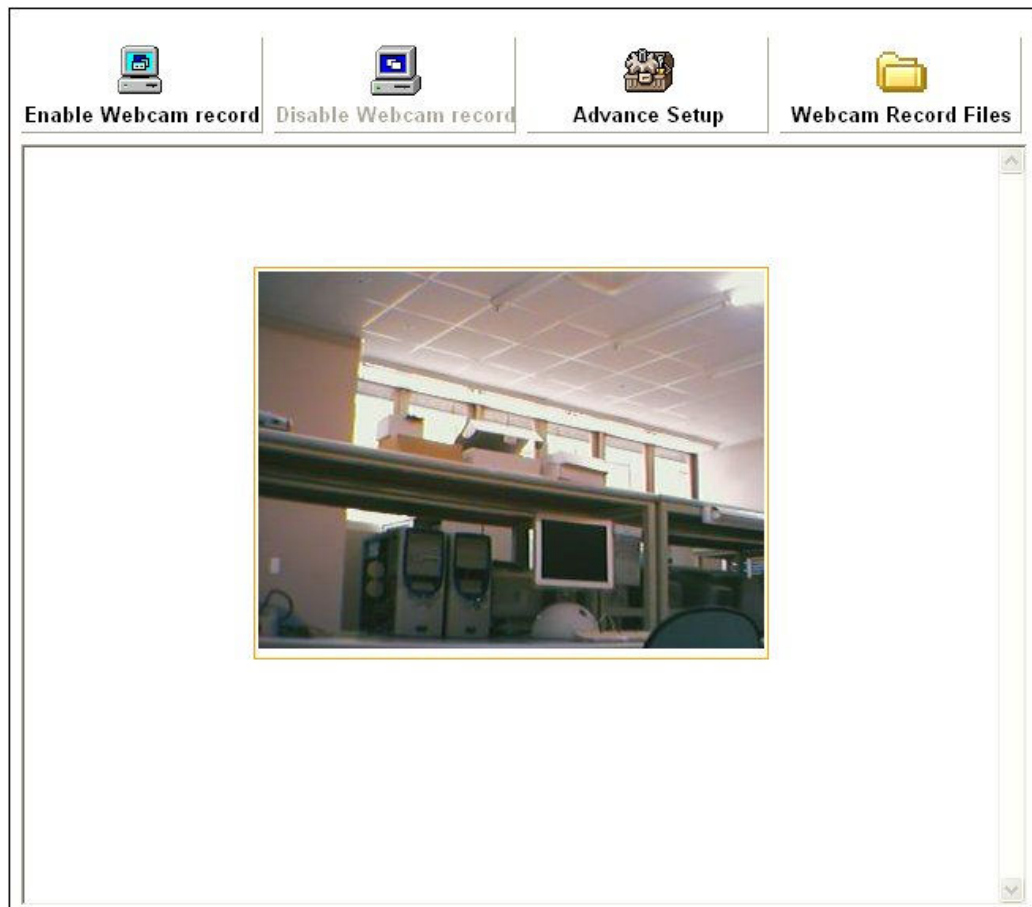
Click **My FTP** to enter the FTP server for the shared folders/files management, e.g. add, delete or edit.



## 4.2.2 My Webcam Record



Click **My Webcam Record** to set up your webcam recorder, advanced settings and to view recorded images in “Webcam Record Files” folder.



## 4.2.3 Exit

Close the server function utility window if you wish to go back to the main window. And click **Exit** to log out the utility.

## 4.3 User Login

**Step 1.** Please select your user name from the drop-down list and enter the password. Then click **Login** to next step.



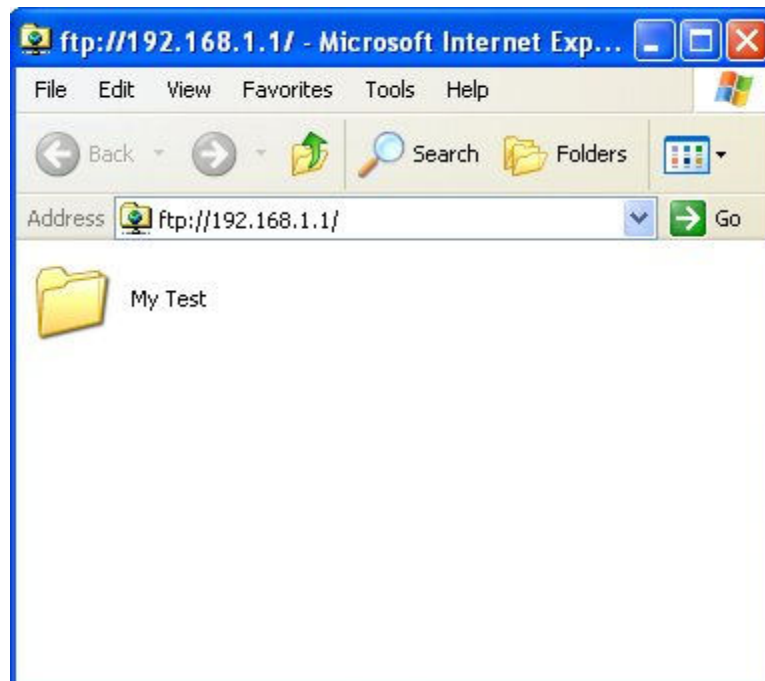
**Step 2.** The server list window shows the icons of previously enabled USB devices. Please click each to find out more.



#### 4.3.1 My FTP



Click **My FTP** to enter user's personal folder on FTP server. Every authorized user can manage and store their files underneath.



#### 4.3.2 My Webcam



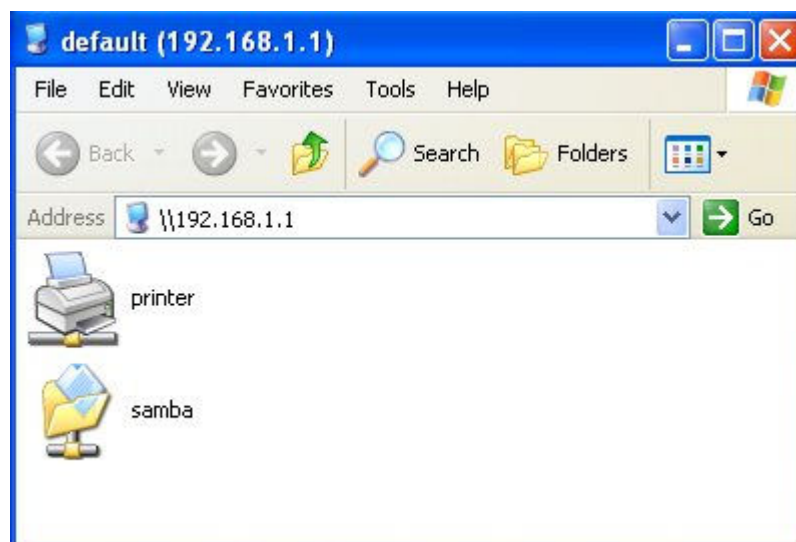
Click **My Webcam** to view the image in real time.



### 4.3.3 Network Disk



Click **Network Disk** to view the folders on Samba Server and click on the folder needed for editing and management.



Note: Only **2** icons show up at most.

1. If a USB flash drive/hard disk is connected and enabled, the **samba** folder shows up.
2. If a printer is connected and enabled, the **printer** icon shows up.



#### 4.3.4 Anonymous



This folder is used for administrator to upload data and share with other users. Click **Anonymous** to access those files and download them freely.



#### 4.3.4 Exit

Close the server function utility window if you wish to go back to the main window. And click **Exit** to log out the utility.

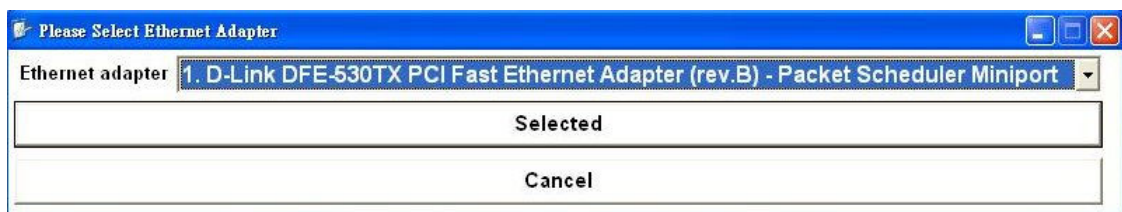


# Chapter 5 Administrator Optional Setup

## 5.1 Quick Setup

This optional setup allows administrator to manage user accounts and set up the servers respectively, e.g. Document Server, Webcam Server and Printer Server etc.

**Step 1.** Please click **Easy Setup** icon on your desktop to start the utility. When the following window pops up, please select your Ethernet adapter for the internet connection.



**Step 2.** Select **Administrator Optional Setup** to start the process.



Then enter the default password **admin**, and click **Yes**.

Username :

Password :

 Exit  Yes

**Step 3.** The window shows the connected devices if there's any. Click on the icons to select the server you need. Look for the illustrations below for each.

### 3.5G plus WLAN Mobile Server Router



 Quick Setup  Advanced Setup

 My FTP  My Webcam  Account Create  DDNS  Network Disk

 Back  Rescan  Finish

**Step 3-1.** Click **My FTP** to enable or disable FTP Server and then click **Finish** to exit.



## 3.5G plus WLAN Mobile Server Router



Quick Setup



Advanced Setup



My FTP



My Webcam



Account Create



DDNS



Network Disk

FTP Server

Enable FTP Server



Back



Rescan



Finish

**Step 3-2.** Click **My Webcam** to enable or disable Webcam Server and then click **Finish** to exit.

## 3.5G plus WLAN Mobile Server Router



Quick Setup



Advanced Setup



My FTP



My Webcam



Account Create



DDNS



Network Disk

Webcam Server

Enable Webcam Server



Back




Rescan



Finish

**Step 3-3.** Click **Account Create** to add users and then click **Finish** to exit.

**3.5G plus WLAN Mobile Server Router**



Quick Setup      Advanced Setup

My FTP   My Webcam   **Account Create**   DDNS   Network Disk

User account:

User name :

Password :

Access Samba Folder  
 Web Camera Monitor  
 FTP Server

name	Right
trista	FTP/Webcam/Samba/

**+** Add

← Back      Rescan      → Finish

**Step 3-4.** Click **DDNS** to fill in the required information and enable this function. Then click **Finish** to exit after completed.

**3.5G plus WLAN Mobile Server Router**



Quick Setup      Advanced Setup

My FTP   My Webcam   Account Create   **DDNS**   Network Disk

DDNS

**Enable Dynamic DNS**

Enable FTP Access from WAN  
 Enable Webcam Access from WAN  
 Enable Printer Access from WAN

Service Provider :

Hostname :  .

User Name :

Password :

← Back      Rescan      → Finish

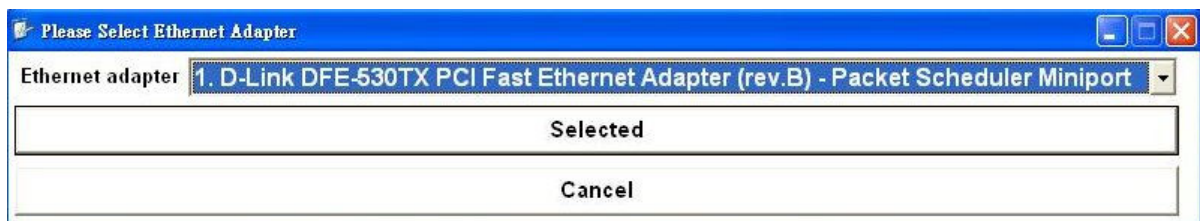
**Step 3-5.** Click **Network Disk** to enable or disable Samba Server and then click **Finish** to exit.



## 5.2 Advanced Setup

This optional setup allows administrator to manage via Web. Please also refer to User Manual for thorough details.

**Step 1.** Please click on **Easy Setup** icon on your desktop to start the utility. When the following window pops up, please select your Ethernet adapter for the internet connection.



**Step 2.** Please click on **Administrator Optional Setup** to enter.



Then enter the default password **admin**, and click **Yes**.

Username :	<input type="text" value="admin"/>
Password :	<input type="password"/>
 Exit	 Yes

**Step 3.** Please click on **Advanced Setup** to start the process.

## 3.5G plus WLAN Mobile Server Router



Quick Setup



Advanced Setup



Back



Rescan



Finish

**Step 4.** A new web browser window pops up for the detailed setup, please click on **Administrator** for further settings. Also read User Manual for your reference.





### 5.2.1 Multi-functioned Application for Webcam

3.5G plus WLAN Mobile Server Router provides the functions of viewing, recording and monitoring from WAN or LAN, it also supports the dial-up mobile communication devices, e.g. PDA, mobile phone and allows monitoring from WAN at any time. Please see illustrations below and read User Manual for more details.

#### 5.2.1.1 Webcam Remote Supervision

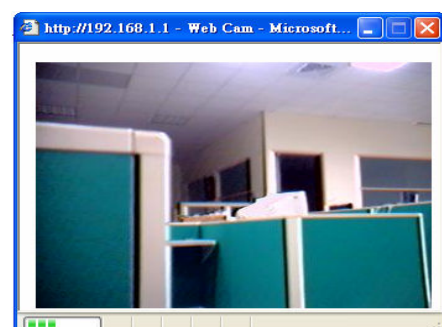
Administrator needs to activate the function from Webcam Server to allow accessing from the Internet, so that administrator and authorized users can access via LAN/WAN IP.

Web Camera Server	
Enable webcam server :	<input checked="" type="radio"/> Enable <input type="radio"/> Disable
Access from WAN :	<input checked="" type="radio"/> Enable <input type="radio"/> Disable

#### 5.2.1.2 Viewing Real-Time Recording

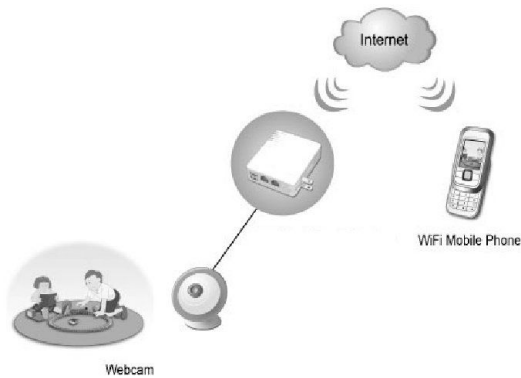
After enabling WAN access by Administrator, authorized users can view real-time recording via LAN/WAN IP.

Web Camera Server	
Enable webcam server :	<input checked="" type="radio"/> Enable <input type="radio"/> Disable
Access from WAN :	<input checked="" type="radio"/> Enable <input type="radio"/> Disable
Image format :	320*240 <input type="button" value="Preview"/>
<input type="button" value="Record Setting"/>	
<input type="button" value="Apply"/> <input type="button" value="Cancel"/>	



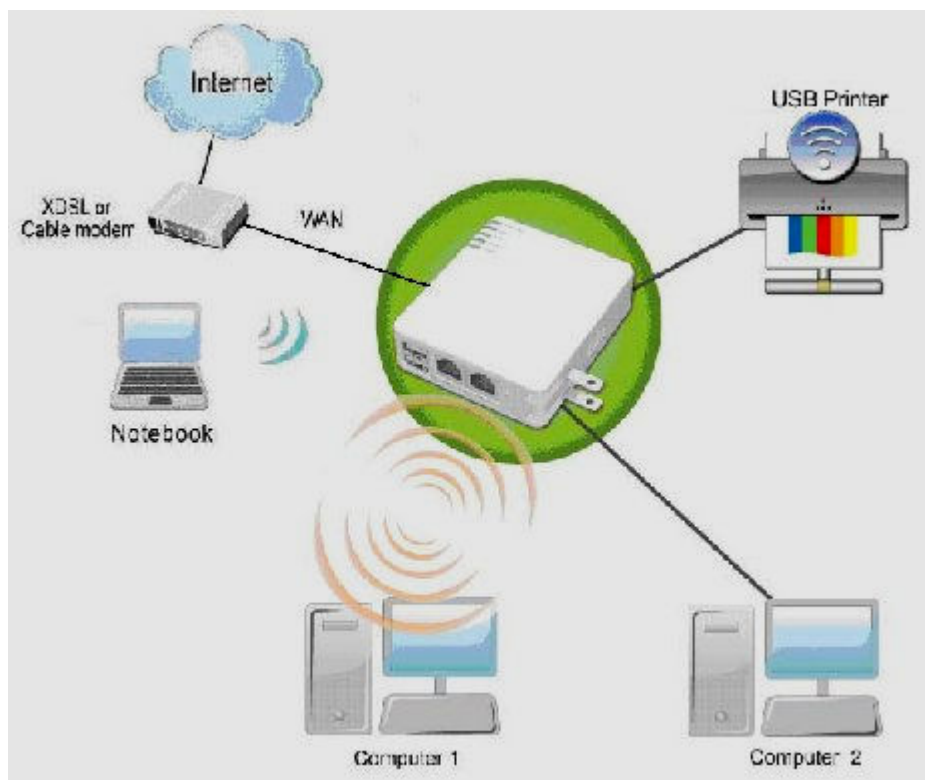
### 5.2.1.3 Monitoring via Mobile Communication Devices

As long as the PDA/mobile phone can access the Internet and the operation system supports Windows CE, just fill the IP address of WIRELESS GATE HOME ANTENNA into Web browser's blank field, e.g. <http://210.68.117.196/webcam.html>. Meanwhile, put the user name and password in the login screen to enter and view the real time image.



### 5.2.2 Sharing Printer and Remote Printing

Printing is still available while you are out of office. WIRELESS GATE HOME ANTENNA supports printing via WAN or LAN. First of all, Administrator needs to activate the sharing service on printer server as the diagram shown. Please refer to User Manual for printer server setup.



### Printer Server Configuration

Enable Printer Server :	<input checked="" type="radio"/> Enable <input type="radio"/> Disable
Enable Printer Access From WAN :	<input checked="" type="radio"/> Enable <input type="radio"/> Disable
Printer Model :	Hewlett-Packard DeskJet 920C
Printer Name :	<input type="text" value="print1"/>
Printer Description :	<input type="text" value="hp"/>
<input type="button" value="Apply"/> <input type="button" value="Cancel"/>	

### 5.2.3 Intelligent Firewall

Three levels of firewall security to avoid hacker attacks. Please refer to User Manual for more details.

### Firewall

General	
Firewall Protection Level :	<input type="text" value="Low"/> ▾
Enable SPI Service :	<input checked="" type="radio"/> Enable <input type="radio"/> Disable
Blocking ICMP Ping from WAN Side :	<input checked="" type="radio"/> Enable <input type="radio"/> Disable
DoS Attacks Blocking Settings	
Enable DoS Attacks Blocking :	<input checked="" type="radio"/> Enable <input type="radio"/> Disable

#### 5.2.3.1 IP Address Filter, MAC Address Filter, URL Filter and filter schedule management.

It allows administrator to manage the Internet usage, e.g. Restriction on Internet access or inappropriate website for kids or employees. Please refer to User Manual for more details.

#### IP Filter Configuration

IP Rule																
Enable IP Filter : <input type="radio"/> Enable <input checked="" type="radio"/> Disable																
Enable Log : <input type="radio"/> Enable <input checked="" type="radio"/> Disable																
Source : AddressMask <input type="text"/> Port <input type="text"/>																
Destination : AddressMask <input type="text"/> Port <input type="text"/>																
In/Out : <input checked="" type="radio"/> In <input type="radio"/> Out																
Protocol : <input checked="" type="radio"/> TCP <input type="radio"/> UDP <input type="radio"/> ICMP																
Listen : <input checked="" type="radio"/> Yes <input type="radio"/> No																
Time Ranges																
Day of Week : <input checked="" type="checkbox"/> Sun <input checked="" type="checkbox"/> Mon <input checked="" type="checkbox"/> Tue <input checked="" type="checkbox"/> Wed <input checked="" type="checkbox"/> Thu <input checked="" type="checkbox"/> Fri <input checked="" type="checkbox"/> Sat																
Start From : 00 : 00																
End to : 23 : 59																
Action : <input type="radio"/> Deny <input checked="" type="radio"/> Allow																
Side : LAN ▾																
<input type="button" value="Apply"/> <input type="button" value="Cancel"/>																
IP Filter List																
<table border="1" style="width: 100%; border-collapse: collapse;"> <thead> <tr> <th>Status</th> <th>Source</th> <th>Destination</th> <th>Time Ranges</th> <th>Rule</th> <th>Action</th> <th>Side</th> <th>Edit/Delete</th> </tr> </thead> <tbody> <tr> <td> </td> <td> </td> <td> </td> <td> </td> <td> </td> <td> </td> <td> </td> <td> </td> </tr> </tbody> </table>	Status	Source	Destination	Time Ranges	Rule	Action	Side	Edit/Delete								
Status	Source	Destination	Time Ranges	Rule	Action	Side	Edit/Delete									

#### MAC Filter Configuration

MAC Filter Action : DenyALL ▾ <input type="button" value="Refresh"/>												
Enable MAC Filter : <input type="radio"/> Enable <input checked="" type="radio"/> Disable												
Enable Log : <input type="radio"/> Enable <input checked="" type="radio"/> Disable												
General												
Description : <input type="text"/>												
MAC Address : <input type="text"/>												
Time Ranges												
Day of Week : <input checked="" type="checkbox"/> Sun <input checked="" type="checkbox"/> Mon <input checked="" type="checkbox"/> Tue <input checked="" type="checkbox"/> Wed <input checked="" type="checkbox"/> Thu <input checked="" type="checkbox"/> Fri <input checked="" type="checkbox"/> Sat												
Start From : 00 : 00												
End to : 23 : 59												
<input type="button" value="Apply"/> <input type="button" value="Cancel"/>												
MAC Filter List												
<table border="1" style="width: 100%; border-collapse: collapse;"> <thead> <tr> <th>ID</th> <th>Status</th> <th>Description</th> <th>MAC Address</th> <th>Time Ranges</th> <th>Edit/Delete</th> </tr> </thead> <tbody> <tr> <td> </td> <td> </td> <td> </td> <td> </td> <td> </td> <td> </td> </tr> </tbody> </table>	ID	Status	Description	MAC Address	Time Ranges	Edit/Delete						
ID	Status	Description	MAC Address	Time Ranges	Edit/Delete							

#### URL Filter Configuration

Enable URL Filter : <input type="radio"/> Enable <input checked="" type="radio"/> Disable												
Enable Log : <input type="radio"/> Enable <input checked="" type="radio"/> Disable												
General												
Description : <input type="text"/>												
URL Keyword : <input type="text"/>												
Time Ranges												
Day of Week : <input checked="" type="checkbox"/> Sun <input checked="" type="checkbox"/> Mon <input checked="" type="checkbox"/> Tue <input checked="" type="checkbox"/> Wed <input checked="" type="checkbox"/> Thu <input checked="" type="checkbox"/> Fri <input checked="" type="checkbox"/> Sat												
Start From : 00 : 00												
End to : 23 : 59												
<input type="button" value="Apply"/> <input type="button" value="Cancel"/>												
URL Filter List												
<table border="1" style="width: 100%; border-collapse: collapse;"> <thead> <tr> <th>ID</th> <th>Status</th> <th>Description</th> <th>URL Keyword</th> <th>Time Ranges</th> <th>Edit/Delete</th> </tr> </thead> <tbody> <tr> <td> </td> <td> </td> <td> </td> <td> </td> <td> </td> <td> </td> </tr> </tbody> </table>	ID	Status	Description	URL Keyword	Time Ranges	Edit/Delete						
ID	Status	Description	URL Keyword	Time Ranges	Edit/Delete							

## 5.2.4 System Management

### 5.2.4.1 Reboot

This function only restarts the unit, not to bring it back to default settings.

Reboot	
Sometimes it may be necessary to reboot the router if it begins working improperly. Rebooting the router will not delete any of your configuration settings. Click reboot button to reboot the router.	
<input type="button" value="Reboot"/>	

### 5.2.4.2 Firmware Upgrade

There is certain risk while upgrading firmware. It is not recommended unless the significant fault is found. The manufacturer will not be responsible for any operational misuses.

Firmware Upgrade	
From time to time, the product may release new versions of the router's firmware. You can click Check Firmware button to check and download up-to-date firmware and click Browse button to locate the file from your local harddisk.	
Current Firmware Version : Ver2.0.2	
Firmware Date : 2007/10/02 12:04:40	
Update Firmware :	<input type="text"/> <input type="button" value="Browse..."/>
<input type="button" value="OK"/> <input type="button" value="Cancel"/>	

**Please download the upgraded firmware to your hard drive first then update. User should restore the unit in next feature after rebooting, in order to update thoroughly.**

### 5.2.4.3 Profile Save

Allows you to either save the current settings as a profile, or reset them to the default.

Profiles Save	
In this page, you can save your current configuration, restore a previously saved configuration, or restore all of the settings in the router to the factory (default) settings.	
Save Settings To PC :	<input type="button" value="Save"/>
Load Settings From PC :	<input type="text"/> <input type="button" value="Browse..."/> <input type="button" value="Load"/>
Restore To Factory Default Settings :	<input type="button" value="Restore"/>
<input type="button" value="Apply"/>	